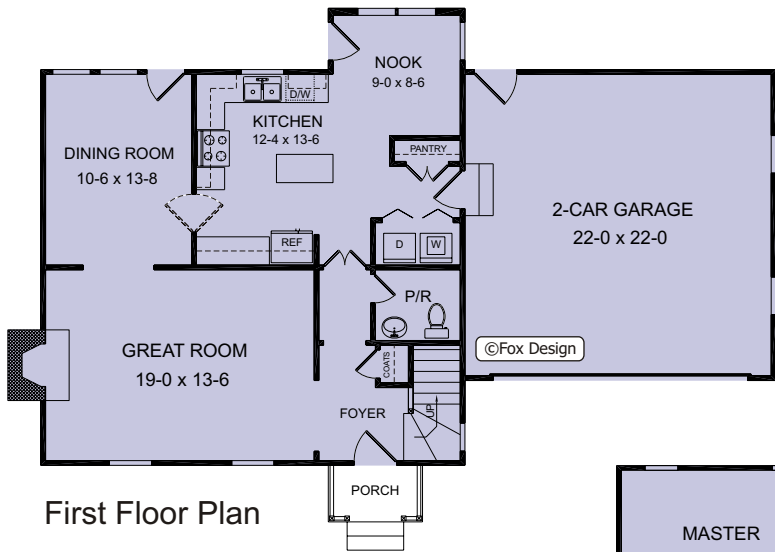


THE WESTRIDGE



Note: Home in photo may have been modified from the original plans.



Plan No: SP1716G1

Total Heated: 1716 sf

First Floor: 882 sf

Second Floor: 834 sf

Bonus Room: 297 sf

Dimensions: 54'-4" w x 36'-4" d

3 Bedrooms, 2 ½ Baths

Price Code: **B**

